



She looked strangely distant and so narrow

Caliche Winds  
Project Proposal

## Offshoring Pathways

The first stage of this work was exhibited at The Museum of Los Sures (New York, USA) in July 2014.

The next stage is the realization of a sculptural wind turbine generator to be used as energy for the installation, thus completing the original concept of the work, which proposes to use wind energy to produce the chemical process of electrolysis, creating a representation of the map of South America and the sea route of Chilean nitrate transport to and from Europe.

A collaboration with the artist and assistant Carlo Crovato, whom I already had a positive experience in previous projects is considered.

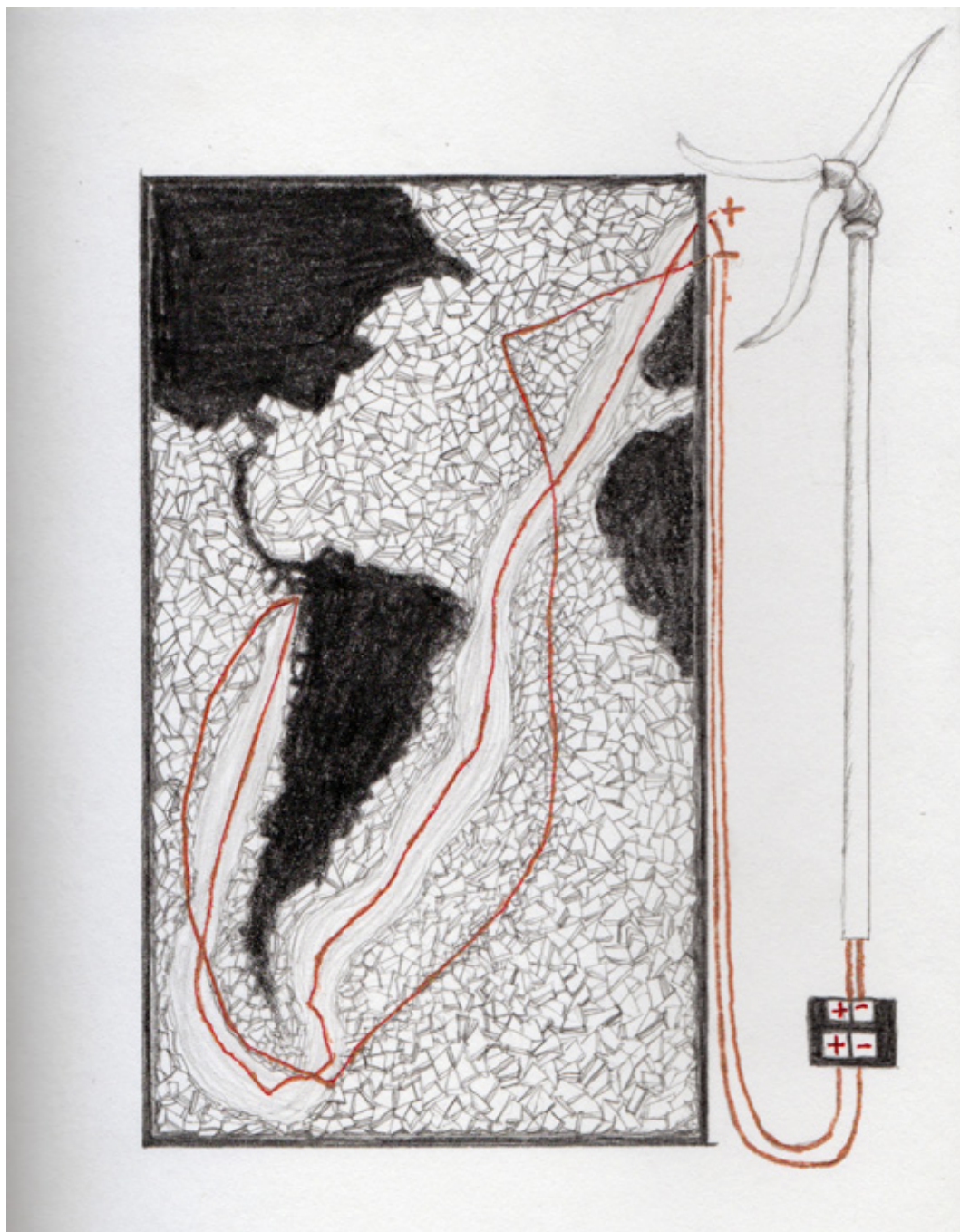
Michelle-Marie Letelier

Offshoring Pathways

El Museo de Los Sures, New York, USA 2014







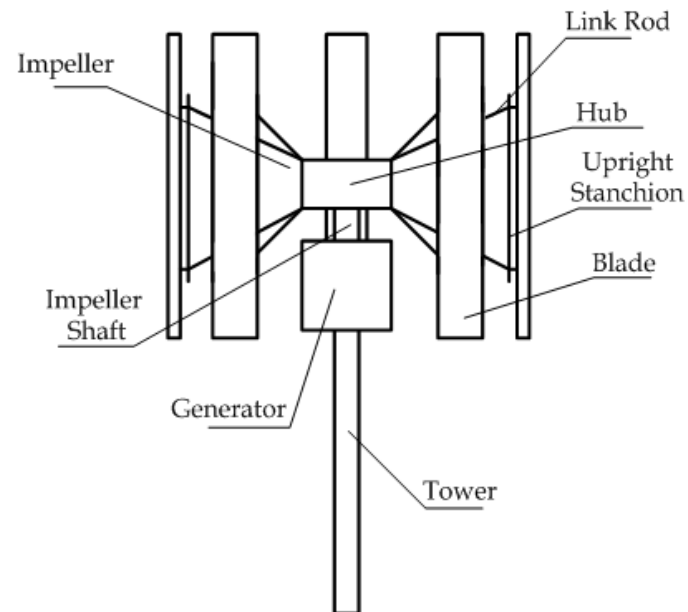
Sketch instalation *Offhoring*  
*Pathways*

Graphite and ink on paper  
14 x 21 cm  
2014

Sketch instalation *Offhoring Pathways*

Graphite and crayon on paper , 58 x 44,5 cm 2014





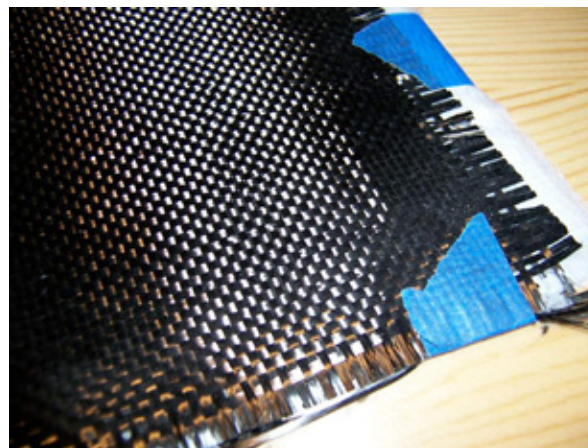
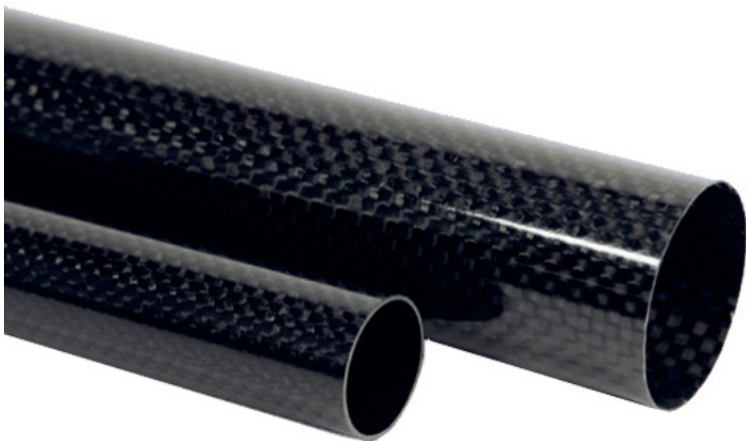
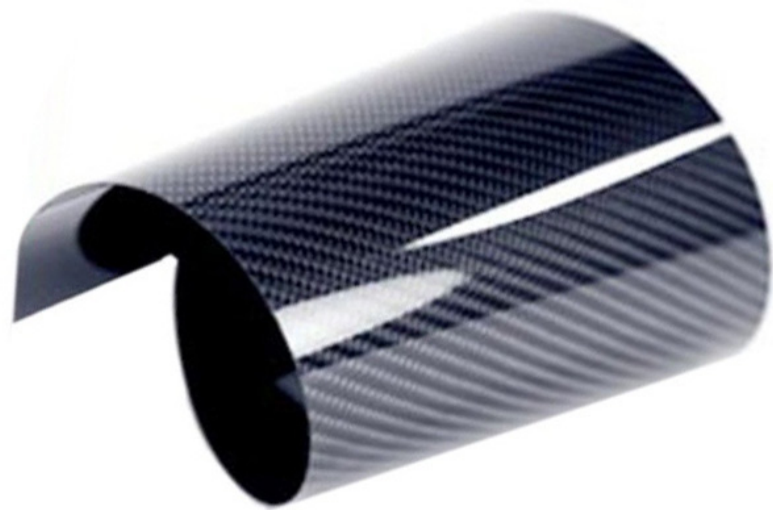
References of Savonius type vertical axis wind turbine.

This type of turbine converts wind power into torsion on a rotating shaft and is very simple to manufacture; it has a small rotation speed and its performance is relatively low.

This turbine is considered to produce using carbon fiber; a lightweight and flexible material.

This turbine would be installed inside the exhibition space, in certain areas where it can collect the air current from ventilation ducts.





References carbon fiber.

The turbine is considered to be produced with this material, as it is light and flexible.

Each carbon fiber is a join of thousands of carbon filaments. It has mechanical properties similar to steel and is as light as wood or plastic.

Due to its hardness, it has greater impact resistance than steel.