

Carlos Irijalba

Synecdoche

Synecdoche

Carlos Irijalba

Continuing the concept and body of work from previous projects such as *Überlegung* (2006) or *Twilight* (2009), *Synecdoche Project* concerns about the visible public space as a field where reality and spectacle often join or cristalize in a random way.

Synecdoche Project, deals with the loss of the World as a field, as a distance, as matter. It involves 1:1 scale installations and intersections between extraurban (suburban) elements such as electricity pylons, towers or billboards and urban architecture. A crossing between those two distant elements in relation with public space, dimension and human scale. A relation between structure and place, individual and phisical public environment. I am presenting here two variations of the same concept.

Theoretically the projects installation concerns the inside and outside transformation of structure and surface from a building in the urban space, as if two topographic maps would put on top one another, just as if both were born together, so the technical performance must be perfect at every scale.

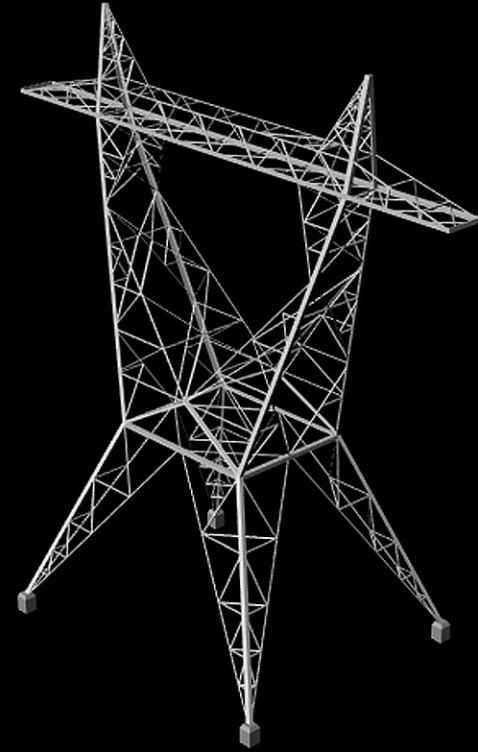
The images shown are studies dealing with hipotética locations. What they do show is the philosophy and statement of the Project. Elements used could change in relation to the final location, for example the tower was concieved for a building not specifically related to art. On the other hand the billboard piece, regarding its connotations, is concieved related to the art space. In this case it is projected as an element happening in the museum space in every level, space, light, etc...Although the piece has also possibilities on dealing with the public space depending on site specific conditions.

For more information about previous related projects such as *überlegung*, *Outside comes first* or *Twilight*, please check the webpage:

www.carlosirijalba.com

Carlos Irijalba.

New York. June 2010



Tower Synechdoche









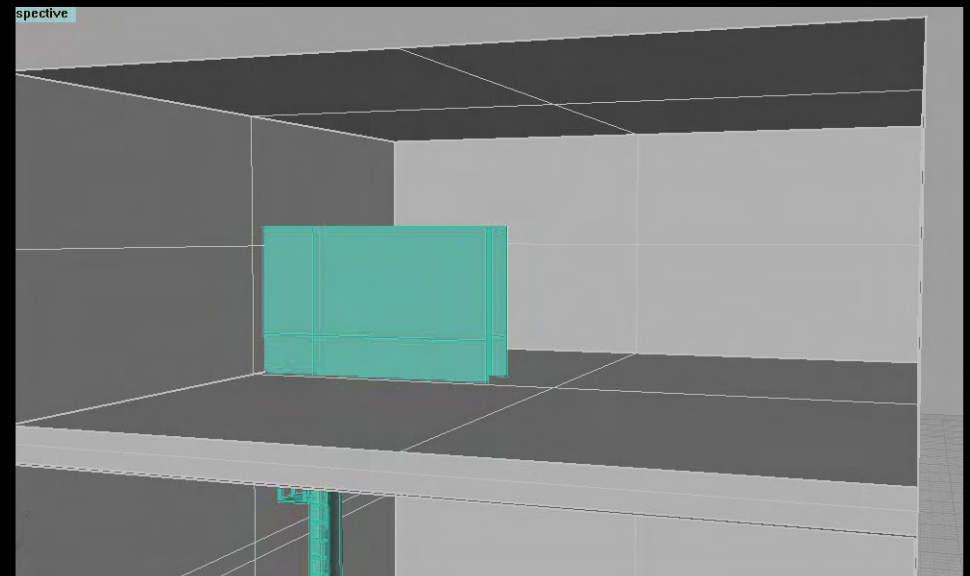
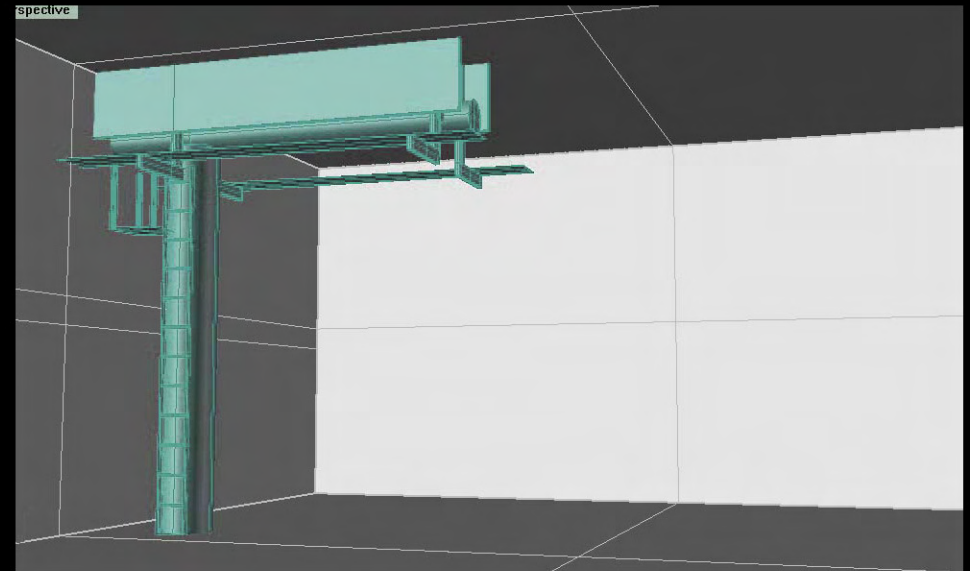
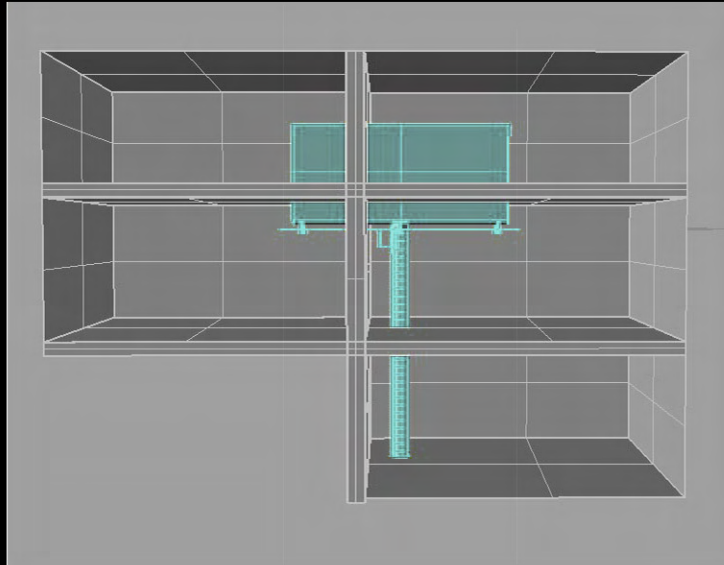








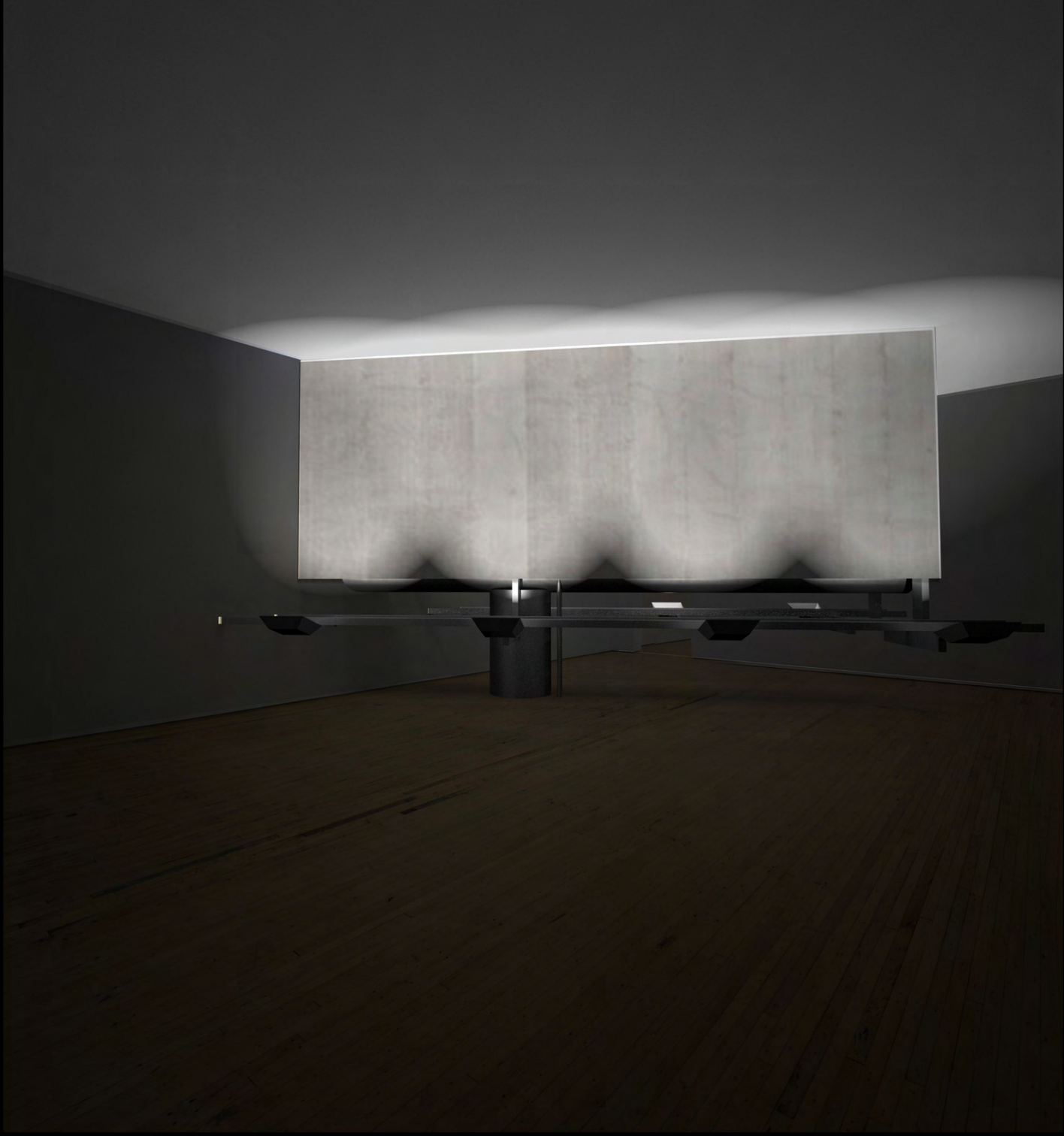
Bilboard Synecdoche







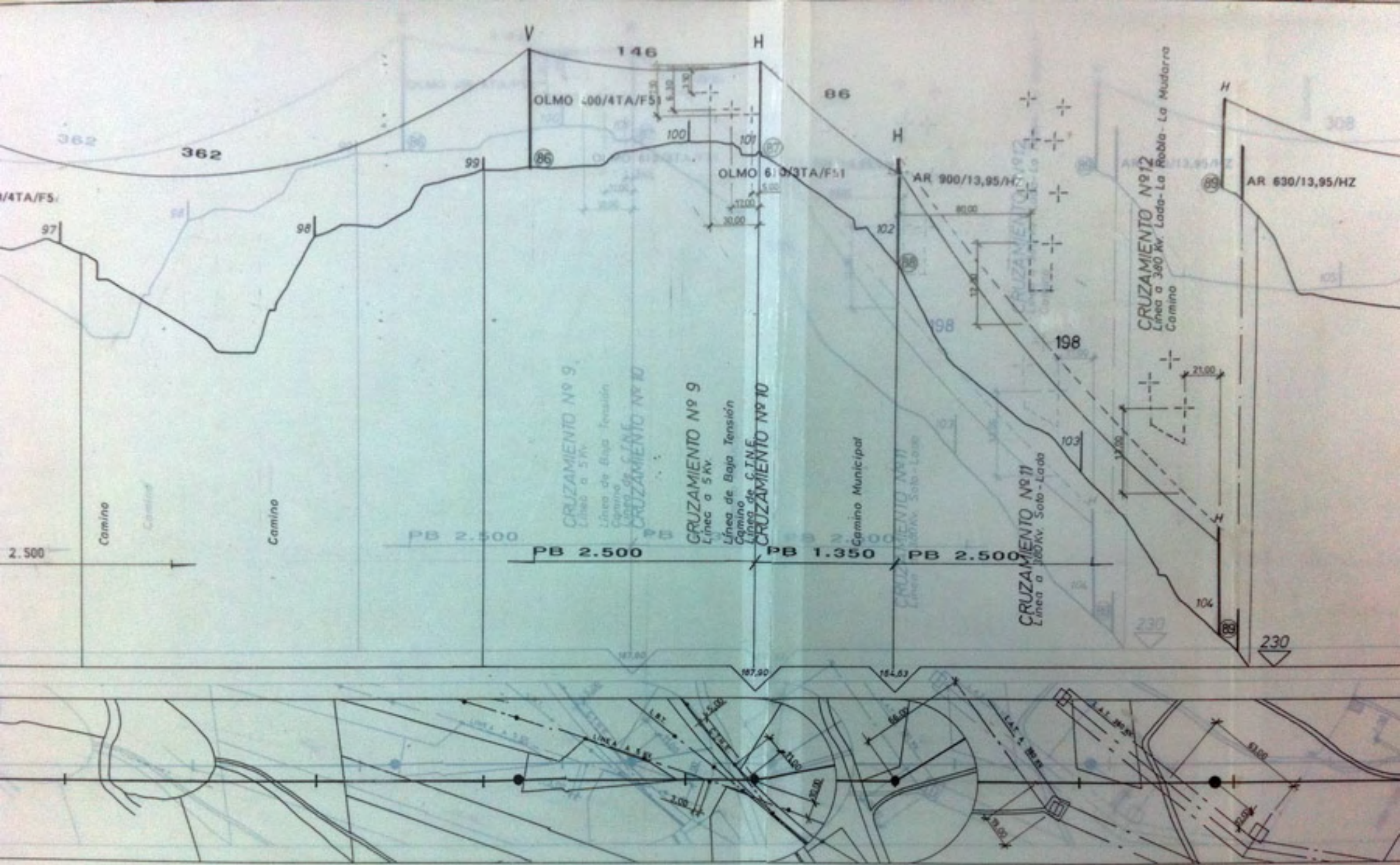


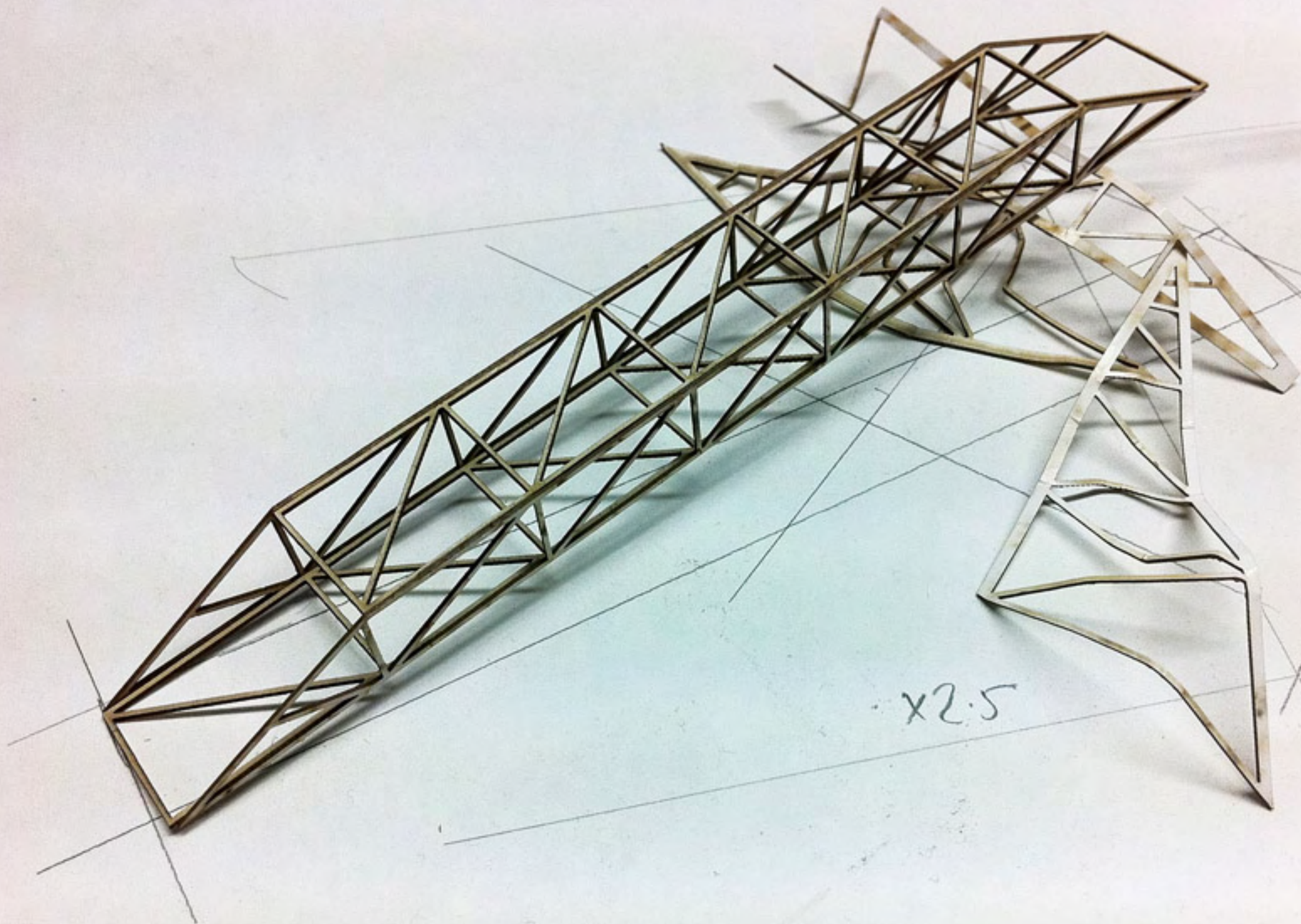




Synecdoche is not a single intervention but a depiction formed by several of them.

The Project is now on preproduction stage and will finally consist of a real 1:1 intervention on an exhibition space and several satellite pieces consisting in models, maps and drawing of the process. All the 3D sketches are just a technical need, all the drawings and models will finally be worked on paper by architecture standards. On the following images is the beginning of the process.





x2.5

